

2014 - 2015 Crime Trends

Ward 1 - Orléans



This report examines all founded Criminal Code of Canada offences that were reported to the Ottawa Police over the last 5 years. Offences have been categorized according to the Uniform Crime Reporting (UCR) Survey version 2.2. Violent Crime, also referred to as Crimes Against The Person, involves the use or threat of force to harm another person. Non-Violent Crimes include Crimes Against Property and Other Criminal Code of Canada Offences

The crime statistics published in this report are accurate on the day that they were produced. Due to ongoing police investigations and internal data quality control efforts, this information is subject to change, including addition, deletion and reclassification of any and all data. Rates and percentages have been rounded.

Crime Rate (1)

	2014	2015	Change	2014	2015	Change	2014	2015	Change
Crime Rate	1,740.7	1,623.2	▼6.7%	373.3	329.1	▼11.8%	1,367.4	1,294.1	▼5.4%

Reported Crime (2)

	2014	2015	Change	2014	2015	Change	2014	2015	Change
Reported Crime	858	794	▼7.5%	184	161	▼12.5%	674	633	▼6.1%

Crime Severity Index (3)

	2014	2015	Change	2014	2015	Change	2014	2015	Change
Crime Severity Index	25.9	21.7	▼16.1%	30.7	24.2	▼21.2%	24.1	20.8	▼13.7%

Clearance Rate % (4)

	2014	2015	Change	2014	2015	Change	2014	2015	Change
Clearance Rate %	27.3%	26.8%	▼0.4%	57.6%	60.2%	▲2.6%	19.0%	18.3%	▼0.7%

Calls for Service

	2014	2015	Change	2014	2015	Change	2014	2015	Change
Calls for Service	9,924	10,456	▲5.4%	126	126	▲0.0%	914	1,495	▲63.6%

(1) Rate is calculated per 100,000 of population. As provided by the City of Ottawa's Planning and Growth Management Department, the population for 2014 and 2015 was 49,291 and 48,915 respectively.

(2) Reported Crime refers to the actual crime reported to the Ottawa Police Service within a calendar year. Unfounded incidents, those deemed through investigation not to have occurred, are excluded.

(3) The Crime Severity Index is a measure of police-reported crime that reflects the relative seriousness of individual offences and tracks changes in crime severity. Values are estimated and do not represent the official CSI as published by Statistics Canada.

(4) Clearance Rate (%) is expressed as a percent and is the sum of all Criminal Code of Canada Offences cleared by charge and cleared otherwise, divided by the total number of actual reported incidents.

2014 - 2015 Crime Trends

Ward 1 - Orléans



Key Crime Trends

Offence	2014			2015			5-Year Average (2)	Change % (2)
	Actual	Rate (1)	Clearance %	Actual	Rate (1)	Clearance %		
Crimes Against The Person	184	373.3	57.6%	161	329.1	60.2%	176	-12.5%
Crimes Against Property	612	1,241.6	15.0%	576	1,177.6	13.5%	748	-5.9%
Other Criminal Code of Canada Offences	62	125.8	58.1%	57	116.5	66.7%	55	-8.1%
Total CCC offences excl Traffic	858	1,740.7	27.3%	794	1,623.2	26.8%	979	-7.5%
Criminal Code Traffic Offences	30	60.9	96.7%	30	61.3	100.0%	75	0.0%
Total CCC Offences incl Traffic	888	1,801.5	29.6%	824	1,684.6	29.5%	1,054	-7.2%

Crimes Against The Person

Offence	2014			2015			5-Year Average (2)	Change % (2)
	Actual	Rate (1)	Clearance %	Actual	Rate (1)	Clearance %		
Homicide (Incidents)	0	0.0	0.0%	0	0.0	0.0%	0	0.0%
Attempted Murder	1	2.0	100.0%	0	0.0	0.0%	0	-100.0%
Robbery	20	40.6	50.0%	9	18.4	55.6%	20	-55.0%
Assaults	88	178.5	64.8%	73	149.2	72.6%	85	-17.0%
Sexual Violations	17	34.5	64.7%	29	59.3	55.2%	20	70.6%
Abduction	1	2.0	200.0%	4	8.2	75.0%	2	300.0%
Uttering Threats or Intimidation	15	30.4	40.0%	9	18.4	44.4%	14	-40.0%
Other Offences	42	85.2	45.2%	37	75.6	43.2%	35	-11.9%
Total Crimes Against Person	184	373.3	57.6%	161	329.1	60.2%	176	-12.5%

Crimes Against Property

Offence	2014			2015			5-Year Average (2)	Change % (2)
	Actual	Rate (1)	Clearance %	Actual	Rate (1)	Clearance %		
Arson	8	16.2	12.5%	3	6.1	0.0%	7	-62.5%
Break and Enter	65	131.9	18.5%	53	108.4	24.5%	60	-18.5%
Theft - Motor Vehicle	33	66.9	36.4%	31	63.4	9.7%	35	-6.1%
Theft Over \$5000	10	20.3	10.0%	1	2.0	0.0%	8	-90.0%
Theft \$5000 and Under	256	519.4	13.7%	270	552.0	11.5%	363	5.5%
Possession of Stolen Goods	7	14.2	71.4%	2	4.1	200.0%	7	-71.4%
Fraud	97	196.8	14.4%	82	167.6	14.6%	95	-15.5%
Mischief	136	275.9	8.8%	134	273.9	11.2%	173	-1.5%
Total Crimes Against Property	612	1,241.6	15.0%	576	1,177.6	13.5%	748	-5.9%

(1) Rate is calculated per 100,000 of population. As provided by the City of Ottawa's Planning and Growth Management Department, the population for 2014 and 2015 was 49,291 and 48,915 respectively.

(2) 5 Year Average and % Change are based on actual values

2014 - 2015 Crime Trends

Ward 1 - Orléans



Other Criminal Code of Canada (CCC) Offences

Offence	2014			2015			5-Year Average (2)	Change % (2)
	Actual	Rate (1)	Clearance %	Actual	Rate (1)	Clearance %		
Offensive Weapons	2	4.1	50.0%	4	8.2	100.0%	4	100.0%
Gaming and Betting	0	0.0	0.0%	0	0.0	0.0%	0	0.0%
Prostitution	0	0.0	0.0%	0	0.0	0.0%	0	0.0%
Other Criminal Code Offences	60	121.7	58.3%	53	108.4	64.2%	51	-11.7%
Total Other CCC Offences	62	125.8	58.1%	57	116.5	66.7%	55	-8.1%

Criminal Code Traffic Offences

Offence	2014			2015			5-Year Average (2)	Change % (2)
	Actual	Rate (1)	Clearance %	Actual	Rate (1)	Clearance %		
Dangerous Operation of Motor Vehicle	0	0.0	0.0%	1	2.0	100.0%	0	0.0%
Impaired Operation of Vehicle	26	52.7	100.0%	26	53.2	100.0%	30	0.0%
Failure to Stop or Remain	2	4.1	50.0%	3	6.1	100.0%	43	50.0%
Driving Motor Vehicle While Prohibited	1	2.0	100.0%	0	0.0	0.0%	2	-100.0%
Other Criminal Code Traffic Offences	1	2.0	100.0%	0	0.0	0.0%	0	-100.0%
Total Criminal Code Traffic Offences	30	60.9	96.7%	30	61.3	100.0%	75	0.0%

Controlled Drug and Substances Act Offences

Offence	2014			2015			5-Year Average (2)	Change % (2)
	Actual	Rate (1)	Clearance %	Actual	Rate (1)	Clearance %		
Cannabis	29	58.8	100.0%	15	30.7	100.0%	33	-48.3%
Ecstasy (Methylenedioxyamphetamine)	0	0.0	0.0%	0	0.0	0.0%	0	0.0%
Crystal Meth (Methamphetamine)	0	0.0	0.0%	0	0.0	0.0%	0	0.0%
Heroin	1	2.0	100.0%	0	0.0	0.0%	0	-100.0%
Cocaine	3	6.1	100.0%	2	4.1	100.0%	1	-33.3%
Other Controlled Drugs and Substances	2	4.1	100.0%	1	2.0	100.0%	2	-50.0%
Total Drug Offences	35	71.0	100.0%	18	36.8	100.0%	36	-48.6%

(1) Rate is calculated per 100,000 of population. As provided by the City of Ottawa's Planning and Growth Management Department, the population for 2014 and 2015 was 49,291 and 48,915 respectively.

(2) 5 Year Average and % Change are based on actual values

2014 - 2015 Crime Trends

Ward 1 - Orléans



Calls For Service

Priority Level (3)	Response Type	2014		2015		Change % (2)
		Actual	Rate (1)	Actual	Rate (1)	
Priority 1	Mobile	126	255.6	126	257.6	0.0%
	Alternate	0	0.0	0	0.0	0.0%
Priority 2	Mobile	912	1,850.2	1,484	3,033.8	62.7%
	Alternate	2	4.1	11	22.5	450.0%
Priority 3	Mobile	1,154	2,341.2	1,148	2,346.9	-0.5%
	Alternate	2	4.1	3	6.1	50.0%
Priority 4	Mobile	4,250	8,622.3	4,009	8,195.8	-5.7%
	Alternate	353	716.2	624	1,275.7	76.8%
Priority 5	Mobile	57	115.6	79	161.5	38.6%
	Alternate	1	2.0	0	0.0	-100.0%
Priority 6	Mobile	1,078	2,187.0	1,236	2,526.8	14.7%
	Alternate	1,922	3,899.3	1,674	3,422.3	-12.9%
Priority 7	Mobile	23	46.7	16	32.7	-30.4%
	Alternate	44	89.3	46	94.0	4.5%
All Priorities	Total Mobile Response	7,600	15,418.6	8,098	16,555.2	6.6%
	Total Alternative Response	2,324	4,714.9	2,358	4,820.6	1.5%
	Total Calls For Service	9,924	20,133.5	10,456	21,375.9	5.4%

(1) Rate is calculated per 100,000 of population. As provided by the City of Ottawa's Planning and Growth Management Department, the population for 2014 and 2015 was 49,291 and 48,915 respectively.

(2) % Change is based on actual values

(3) Call priority is determined based on the seriousness of the incident, ranging from imminent danger to life (P1) to property pickup (P7). The assignment of priority also considers the safety of police officers and the general public in traveling to the scene of the event.

2014 - 2015 Crime Trends

Ward 1 - Orléans

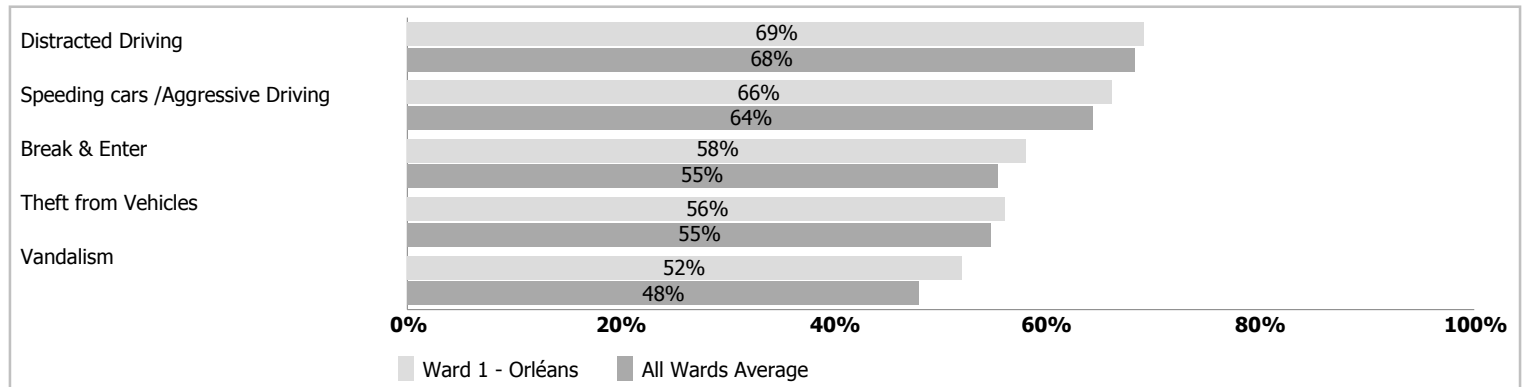


Selected Public Survey Results (2015)

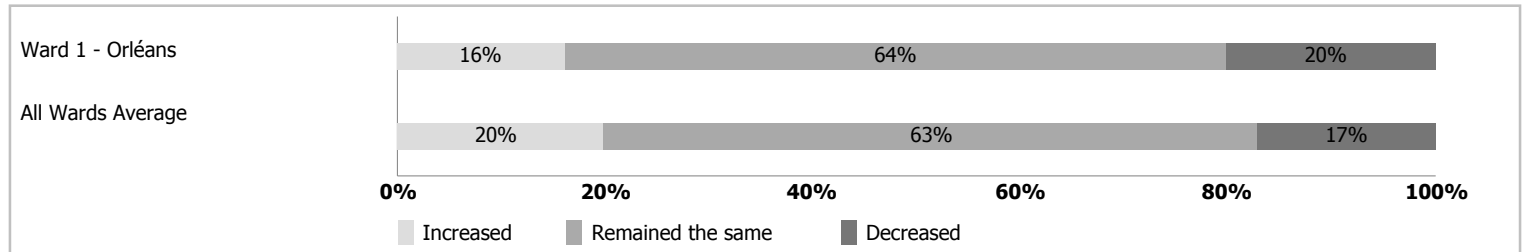
The Ottawa Police Service (OPS) and the Ottawa Police Services Board regularly seeks input on residents' perception of safety and security in their communities, concerns about crime, priorities for the police, and residents' satisfaction with police services. The information collected from the Public Survey assists the OPS to identify priorities, areas for improvement and helps the development of the Business Plan, published every three years.

For more information on the 2015 Public Survey, including citywide results, please refer to the OPS Highlights Report located on ottawapolice.ca. Please note, the following information represents the opinions and perceptions of respondents by ward and is not based on official crime figures or reports.

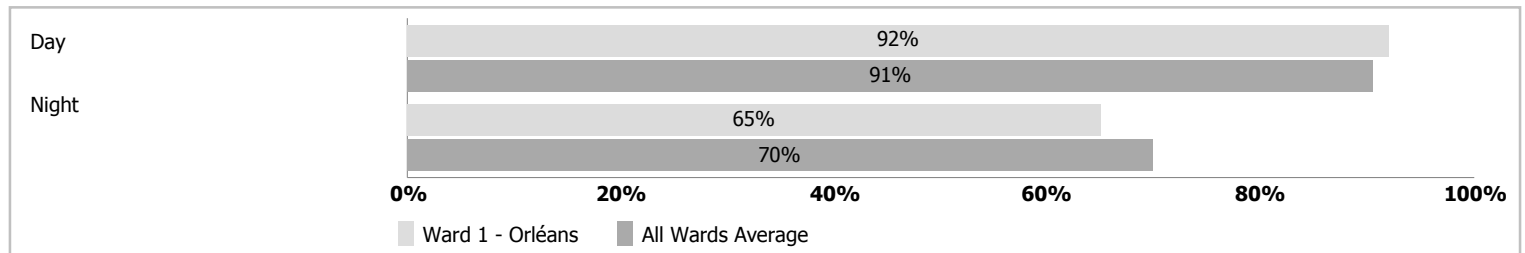
Top Five Ward Concerns



Level Of Crime



Feeling Of Safety In The Neighbourhood



Satisfaction With The Ottawa Police Services

