

2014 - 2015 Crime Trends

Ward 10 - Gloucester-Southgate



This report examines all founded Criminal Code of Canada offences that were reported to the Ottawa Police over the last 5 years. Offences have been categorized according to the Uniform Crime Reporting (UCR) Survey version 2.2. Violent Crime, also referred to as Crimes Against The Person, involves the use or threat of force to harm another person. Non-Violent Crimes include Crimes Against Property and Other Criminal Code of Canada Offences

The crime statistics published in this report are accurate on the day that they were produced. Due to ongoing police investigations and internal data quality control efforts, this information is subject to change, including addition, deletion and reclassification of any and all data. Rates and percentages have been rounded.

Crime Rate (1)

Year	Crime Rate	% Change	Violent Crime	% Change	Non-Violent Crime	% Change
2014	3,321.4		486.5		2,834.9	
2015	3,259.2	▼1.9%	471.6	▼3.1%	2,787.6	▼1.7%

Reported Crime (2)

Year	Reported Crime	% Change	Violent Crime	% Change	Non-Violent Crime	% Change
2014	1,577		231		1,346	
2015	1,541	▼2.3%	223	▼3.5%	1,318	▼2.1%

Crime Severity Index (3)

Year	CSI	% Change	Violent Crime	% Change	Non-Violent Crime	% Change
2014	45.2		40.2		46.9	
2015	47.0	▲3.9%	46.1	▲14.6%	47.2	▲0.6%

Clearance Rate % (4)

Year	Clearance Rate %	% Change	Violent Crime	% Change	Non-Violent Crime	% Change
2014	34.0%		51.1%		31.1%	
2015	37.2%	▲3.2%	59.2%	▲8.1%	33.5%	▲2.4%

Calls for Service

Year	Calls for Service	% Change	Priority 1	% Change	Priority 2	% Change
2014	17,108		180		1,179	
2015	16,783	▼1.9%	205	▲13.9%	1,154	▼2.1%

(1) Rate is calculated per 100,000 of population. As provided by the City of Ottawa's Planning and Growth Management Department, the population for 2014 and 2015 was 47,480 and 47,281 respectively.

(2) Reported Crime refers to the actual crime reported to the Ottawa Police Service within a calendar year. Unfounded incidents, those deemed through investigation not to have occurred, are excluded.

(3) The Crime Severity Index is a measure of police-reported crime that reflects the relative seriousness of individual offences and tracks changes in crime severity. Values are estimated and do not represent the official CSI as published by Statistics Canada.

(4) Clearance Rate (%) is expressed as a percent and is the sum of all Criminal Code of Canada Offences cleared by charge and cleared otherwise, divided by the total number of actual reported incidents.

2014 - 2015 Crime Trends

Ward 10 - Gloucester-Southgate



Key Crime Trends

Offence	2014			2015			5-Year Average (2)	Change % (2)
	Actual	Rate (1)	Clearance %	Actual	Rate (1)	Clearance %		
Crimes Against The Person	231	486.5	51.1%	223	471.6	59.2%	263	-3.5%
Crimes Against Property	1,198	2,523.2	25.8%	1,194	2,525.3	29.4%	1,191	-0.3%
Other Criminal Code of Canada Offences	148	311.7	73.6%	124	262.3	72.6%	140	-16.2%
Total CCC offences excl Traffic	1,577	3,321.4	34.0%	1,541	3,259.2	37.2%	1,594	-2.3%
Criminal Code Traffic Offences	48	101.1	95.8%	46	97.3	95.7%	104	-4.2%
Total CCC Offences incl Traffic	1,625	3,422.5	35.8%	1,587	3,356.5	38.9%	1,699	-2.3%

Crimes Against The Person

Offence	2014			2015			5-Year Average (2)	Change % (2)
	Actual	Rate (1)	Clearance %	Actual	Rate (1)	Clearance %		
Homicide (Incidents)	0	0.0	0.0%	1	2.1	100.0%	0	0.0%
Attempted Murder	0	0.0	0.0%	1	2.1	100.0%	0	0.0%
Robbery	27	56.9	44.4%	19	40.2	57.9%	37	-29.6%
Assaults	106	223.3	59.4%	113	239.0	67.3%	128	6.6%
Sexual Violations	15	31.6	46.7%	23	48.6	47.8%	19	53.3%
Abduction	6	12.6	100.0%	5	10.6	60.0%	6	-16.7%
Uttering Threats or Intimidation	23	48.4	65.2%	25	52.9	64.0%	25	8.7%
Other Offences	54	113.7	27.8%	36	76.1	36.1%	46	-33.3%
Total Crimes Against Person	231	486.5	51.1%	223	471.6	59.2%	263	-3.5%

Crimes Against Property

Offence	2014			2015			5-Year Average (2)	Change % (2)
	Actual	Rate (1)	Clearance %	Actual	Rate (1)	Clearance %		
Arson	5	10.5	20.0%	6	12.7	0.0%	8	20.0%
Break and Enter	130	273.8	17.7%	117	247.5	19.7%	113	-10.0%
Theft - Motor Vehicle	59	124.3	13.6%	66	139.6	10.6%	76	11.9%
Theft Over \$5000	14	29.5	7.1%	10	21.2	0.0%	11	-28.6%
Theft \$5000 and Under	583	1,227.9	37.0%	555	1,173.8	42.7%	563	-4.8%
Possession of Stolen Goods	5	10.5	60.0%	6	12.7	83.3%	8	20.0%
Fraud	161	339.1	24.8%	199	420.9	26.6%	164	23.6%
Mischief	241	507.6	7.1%	235	497.0	11.1%	248	-2.5%
Total Crimes Against Property	1,198	2,523.2	25.8%	1,194	2,525.3	29.4%	1,191	-0.3%

(1) Rate is calculated per 100,000 of population. As provided by the City of Ottawa's Planning and Growth Management Department, the population for 2014 and 2015 was 47,480 and 47,281 respectively.

(2) 5 Year Average and % Change are based on actual values

2014 - 2015 Crime Trends

Ward 10 - Gloucester-Southgate



Other Criminal Code of Canada (CCC) Offences

Offence	2014			2015			5-Year Average (2)	Change % (2)
	Actual	Rate (1)	Clearance %	Actual	Rate (1)	Clearance %		
Offensive Weapons	21	44.2	90.5%	16	33.8	93.8%	22	-23.8%
Gaming and Betting	0	0.0	0.0%	0	0.0	0.0%	0	0.0%
Prostitution	0	0.0	0.0%	0	0.0	0.0%	0	0.0%
Other Criminal Code Offences	127	267.5	70.9%	108	228.4	69.4%	118	-15.0%
Total Other CCC Offences	148	311.7	73.6%	124	262.3	72.6%	140	-16.2%

Criminal Code Traffic Offences

Offence	2014			2015			5-Year Average (2)	Change % (2)
	Actual	Rate (1)	Clearance %	Actual	Rate (1)	Clearance %		
Dangerous Operation of Motor Vehicle	6	12.6	66.7%	1	2.1	100.0%	4	-83.3%
Impaired Operation of Vehicle	29	61.1	100.0%	39	82.5	100.0%	31	34.5%
Failure to Stop or Remain	5	10.5	100.0%	3	6.3	33.3%	65	-40.0%
Driving Motor Vehicle While Prohibited	5	10.5	100.0%	2	4.2	100.0%	4	-60.0%
Other Criminal Code Traffic Offences	3	6.3	100.0%	1	2.1	100.0%	1	-66.7%
Total Criminal Code Traffic Offences	48	101.1	95.8%	46	97.3	95.7%	104	-4.2%

Controlled Drug and Substances Act Offences

Offence	2014			2015			5-Year Average (2)	Change % (2)
	Actual	Rate (1)	Clearance %	Actual	Rate (1)	Clearance %		
Cannabis	49	103.2	95.9%	48	101.5	97.9%	48	-2.0%
Ecstasy (Methylenedioxyamphetamine)	2	4.2	50.0%	0	0.0	0.0%	0	-100.0%
Crystal Meth (Methamphetamine)	0	0.0	0.0%	0	0.0	0.0%	0	0.0%
Heroin	0	0.0	0.0%	0	0.0	0.0%	0	0.0%
Cocaine	9	19.0	111.1%	6	12.7	100.0%	7	-33.3%
Other Controlled Drugs and Substances	1	2.1	100.0%	3	6.3	100.0%	2	200.0%
Total Drug Offences	61	128.5	96.7%	57	120.6	98.2%	58	-6.6%

(1) Rate is calculated per 100,000 of population. As provided by the City of Ottawa's Planning and Growth Management Department, the population for 2014 and 2015 was 47,480 and 47,281 respectively.

(2) 5 Year Average and % Change are based on actual values

2014 - 2015 Crime Trends

Ward 10 - Gloucester-Southgate



Calls For Service

Priority Level (3)	Response Type	2014		2015		Change % (2)
		Actual	Rate (1)	Actual	Rate (1)	
Priority 1	Mobile	179	377.0	205	433.6	14.5%
	Alternate	1	2.1	0	0.0	-100.0%
Priority 2	Mobile	1,177	2,478.9	1,152	2,436.5	-2.1%
	Alternate	2	4.2	2	4.2	0.0%
Priority 3	Mobile	1,621	3,414.1	1,711	3,618.8	5.6%
	Alternate	0	0.0	1	2.1	0.0%
Priority 4	Mobile	8,083	17,024.0	7,513	15,890.1	-7.1%
	Alternate	531	1,118.4	928	1,962.7	74.8%
Priority 5	Mobile	63	132.7	140	296.1	122.2%
	Alternate	0	0.0	0	0.0	0.0%
Priority 6	Mobile	1,544	3,251.9	1,753	3,707.6	13.5%
	Alternate	3,640	7,666.4	3,176	6,717.3	-12.7%
Priority 7	Mobile	48	101.1	28	59.2	-41.7%
	Alternate	219	461.2	174	368.0	-20.5%
All Priorities	Total Mobile Response	12,715	26,779.7	12,502	26,441.9	-1.7%
	Total Alternative Response	4,393	9,252.3	4,281	9,054.4	-2.5%
	Total Calls For Service	17,108	36,032.0	16,783	35,496.3	-1.9%

(1) Rate is calculated per 100,000 of population. As provided by the City of Ottawa's Planning and Growth Management Department, the population for 2014 and 2015 was 47,480 and 47,281 respectively.

(2) % Change is based on actual values

(3) Call priority is determined based on the seriousness of the incident, ranging from imminent danger to life (P1) to property pickup (P7). The assignment of priority also considers the safety of police officers and the general public in traveling to the scene of the event.

2014 - 2015 Crime Trends

Ward 10 - Gloucester-Southgate

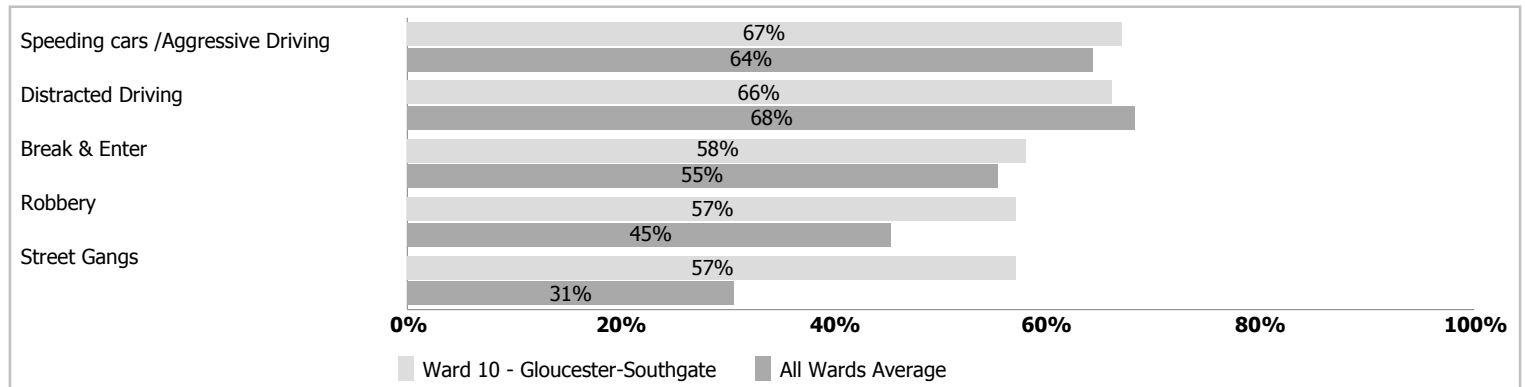


Selected Public Survey Results (2015)

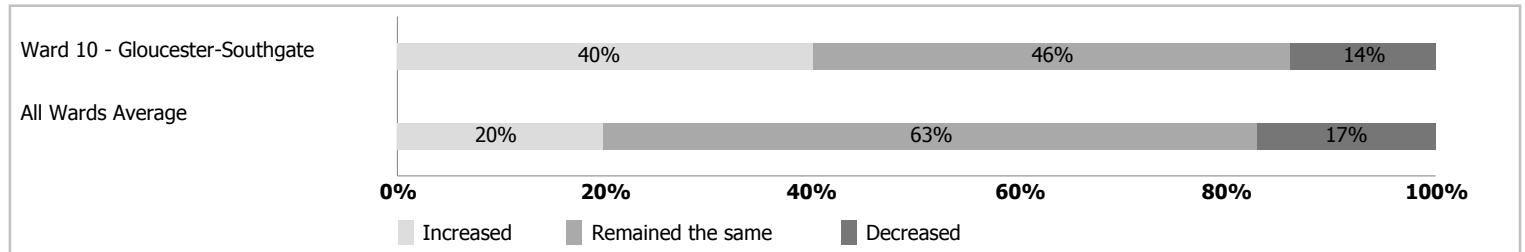
The Ottawa Police Service (OPS) and the Ottawa Police Services Board regularly seeks input on residents' perception of safety and security in their communities, concerns about crime, priorities for the police, and residents' satisfaction with police services. The information collected from the Public Survey assists the OPS to identify priorities, areas for improvement and helps the development of the Business Plan, published every three years.

For more information on the 2015 Public Survey, including citywide results, please refer to the OPS Highlights Report located on ottawapolice.ca. Please note, the following information represents the opinions and perceptions of respondents by ward and is not based on official crime figures or reports.

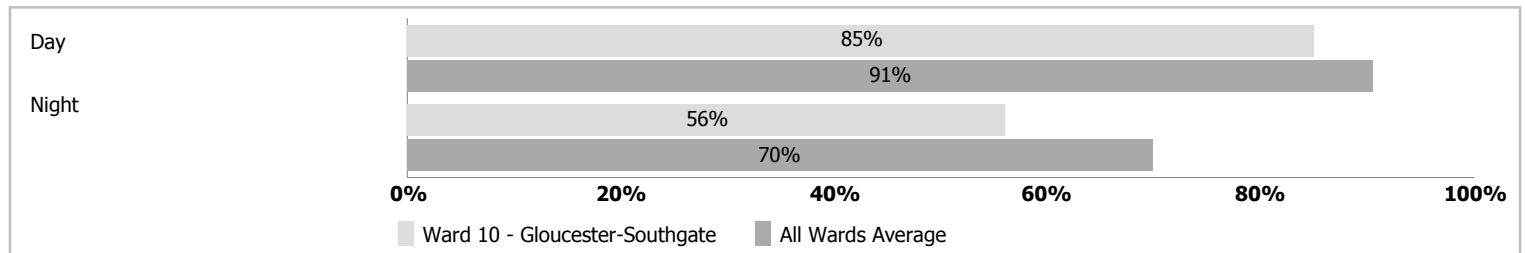
Top Five Ward Concerns



Level Of Crime



Feeling Of Safety In The Neighbourhood



Satisfaction With The Ottawa Police Services

