

# 2014 - 2015 Crime Trends

## Ward 15 - Kitchissippi



This report examines all founded Criminal Code of Canada offences that were reported to the Ottawa Police over the last 5 years. Offences have been categorized according to the Uniform Crime Reporting (UCR) Survey version 2.2. Violent Crime, also referred to as Crimes Against The Person, involves the use or threat of force to harm another person. Non-Violent Crimes include Crimes Against Property and Other Criminal Code of Canada Offences

The crime statistics published in this report are accurate on the day that they were produced. Due to ongoing police investigations and internal data quality control efforts, this information is subject to change, including addition, deletion and reclassification of any and all data. Rates and percentages have been rounded.

### Crime Rate (1)

	2014	2015	Change	2014	2015	Change	2014	2015	Change
<b>Crime Rate</b>	3,850.6	3,344.7	▼13.1%	515.3	491.4	▼4.6%	3,335.3	2,853.3	▼14.5%

### Reported Crime (2)

<b>Reported Crime</b>	1,629	1,443	▼11.4%	218	212	▼2.8%	1,411	1,231	▼12.8%
-----------------------	-------	-------	--------	-----	-----	-------	-------	-------	--------

### Crime Severity Index (3)

<b>Crime Severity Index</b>	47.9	44.5	▼7.0%	34.1	32.8	▼4.0%	52.8	48.7	▼7.8%
-----------------------------	------	------	-------	------	------	-------	------	------	-------

### Clearance Rate % (4)

<b>Clearance Rate %</b>	30.0%	36.1%	▲6.1%	58.7%	59.9%	▲1.2%	25.6%	32.0%	▲6.4%
-------------------------	-------	-------	-------	-------	-------	-------	-------	-------	-------

### Calls for Service

	2014	2015	Change	2014	2015	Change	2014	2015	Change
<b>Calls for Service</b>	12,395	12,040	▼2.9%	203	165	▼18.7%	1,015	1,174	▲15.7%

(1) Rate is calculated per 100,000 of population. As provided by the City of Ottawa's Planning and Growth Management Department, the population for 2014 and 2015 was 42,305 and 43,143 respectively.

(2) Reported Crime refers to the actual crime reported to the Ottawa Police Service within a calendar year. Unfounded incidents, those deemed through investigation not to have occurred, are excluded.

(3) The Crime Severity Index is a measure of police-reported crime that reflects the relative seriousness of individual offences and tracks changes in crime severity. Values are estimated and do not represent the official CSI as published by Statistics Canada.

(4) Clearance Rate (%) is expressed as a percent and is the sum of all Criminal Code of Canada Offences cleared by charge and cleared otherwise, divided by the total number of actual reported incidents.

# 2014 - 2015 Crime Trends

## Ward 15 - Kitchissippi



### Key Crime Trends

Offence	2014			2015			5-Year Average (2)	Change % (2)
	Actual	Rate (1)	Clearance %	Actual	Rate (1)	Clearance %		
Crimes Against The Person	218	515.3	58.7%	212	491.4	59.9%	210	-2.8%
Crimes Against Property	1,323	3,127.3	22.7%	1,148	2,660.9	30.0%	1,326	-13.2%
Other Criminal Code of Canada Offences	88	208.0	69.3%	83	192.4	60.2%	76	-5.7%
<b>Total CCC offences excl Traffic</b>	<b>1,629</b>	<b>3,850.6</b>	<b>30.0%</b>	<b>1,443</b>	<b>3,344.7</b>	<b>36.1%</b>	<b>1,612</b>	<b>-11.4%</b>
Criminal Code Traffic Offences	22	52.0	95.5%	22	51.0	95.5%	66	0.0%
<b>Total CCC Offences incl Traffic</b>	<b>1,651</b>	<b>3,902.6</b>	<b>30.9%</b>	<b>1,465</b>	<b>3,395.7</b>	<b>37.0%</b>	<b>1,678</b>	<b>-11.3%</b>

### Crimes Against The Person

Offence	2014			2015			5-Year Average (2)	Change % (2)
	Actual	Rate (1)	Clearance %	Actual	Rate (1)	Clearance %		
Homicide (Incidents)	0	0.0	0.0%	0	0.0	0.0%	0	0.0%
Attempted Murder	0	0.0	0.0%	0	0.0	0.0%	0	0.0%
Robbery	17	40.2	58.8%	17	39.4	41.2%	25	0.0%
Assaults	125	295.5	66.4%	130	301.3	67.7%	119	4.0%
Sexual Violations	24	56.7	29.2%	20	46.4	55.0%	19	-16.7%
Abduction	2	4.7	50.0%	1	2.3	100.0%	2	-50.0%
Uttering Threats or Intimidation	19	44.9	68.4%	20	46.4	65.0%	18	5.3%
Other Offences	31	73.3	45.2%	24	55.6	29.2%	27	-22.6%
<b>Total Crimes Against Person</b>	<b>218</b>	<b>515.3</b>	<b>58.7%</b>	<b>212</b>	<b>491.4</b>	<b>59.9%</b>	<b>210</b>	<b>-2.8%</b>

### Crimes Against Property

Offence	2014			2015			5-Year Average (2)	Change % (2)
	Actual	Rate (1)	Clearance %	Actual	Rate (1)	Clearance %		
Arson	8	18.9	0.0%	7	16.2	0.0%	5	-12.5%
Break and Enter	166	392.4	33.1%	161	373.2	46.0%	176	-3.0%
Theft - Motor Vehicle	43	101.6	11.6%	40	92.7	10.0%	48	-7.0%
Theft Over \$5000	9	21.3	33.3%	7	16.2	85.7%	9	-22.2%
Theft \$5000 and Under	778	1,839.0	25.1%	618	1,432.4	32.7%	752	-20.6%
Possession of Stolen Goods	6	14.2	100.0%	6	13.9	83.3%	6	0.0%
Fraud	88	208.0	25.0%	129	299.0	24.0%	115	46.6%
Mischief	225	531.9	6.2%	180	417.2	12.2%	213	-20.0%
<b>Total Crimes Against Property</b>	<b>1,323</b>	<b>3,127.3</b>	<b>22.7%</b>	<b>1,148</b>	<b>2,660.9</b>	<b>30.0%</b>	<b>1,326</b>	<b>-13.2%</b>

(1) Rate is calculated per 100,000 of population. As provided by the City of Ottawa's Planning and Growth Management Department, the population for 2014 and 2015 was 42,305 and 43,143 respectively.

(2) 5 Year Average and % Change are based on actual values

## 2014 - 2015 Crime Trends

### Ward 15 - Kitchissippi



#### Other Criminal Code of Canada (CCC) Offences

Offence	2014			2015			5-Year Average (2)	Change % (2)
	Actual	Rate (1)	Clearance %	Actual	Rate (1)	Clearance %		
Offensive Weapons	5	11.8	100.0%	4	9.3	100.0%	6	-20.0%
Gaming and Betting	0	0.0	0.0%	0	0.0	0.0%	0	0.0%
Prostitution	1	2.4	0.0%	0	0.0	0.0%	0	-100.0%
Other Criminal Code Offences	82	193.8	68.3%	79	183.1	58.2%	70	-3.7%
<b>Total Other CCC Offences</b>	<b>88</b>	<b>208.0</b>	<b>69.3%</b>	<b>83</b>	<b>192.4</b>	<b>60.2%</b>	<b>76</b>	<b>-5.7%</b>

#### Criminal Code Traffic Offences

Offence	2014			2015			5-Year Average (2)	Change % (2)
	Actual	Rate (1)	Clearance %	Actual	Rate (1)	Clearance %		
Dangerous Operation of Motor Vehicle	1	2.4	100.0%	2	4.6	50.0%	1	100.0%
Impaired Operation of Vehicle	18	42.5	100.0%	18	41.7	100.0%	17	0.0%
Failure to Stop or Remain	2	4.7	50.0%	1	2.3	100.0%	47	-50.0%
Driving Motor Vehicle While Prohibited	1	2.4	100.0%	1	2.3	100.0%	1	0.0%
Other Criminal Code Traffic Offences	0	0.0	0.0%	0	0.0	0.0%	0	0.0%
<b>Total Criminal Code Traffic Offences</b>	<b>22</b>	<b>52.0</b>	<b>95.5%</b>	<b>22</b>	<b>51.0</b>	<b>95.5%</b>	<b>66</b>	<b>0.0%</b>

#### Controlled Drug and Substances Act Offences

Offence	2014			2015			5-Year Average (2)	Change % (2)
	Actual	Rate (1)	Clearance %	Actual	Rate (1)	Clearance %		
Cannabis	22	52.0	100.0%	15	34.8	93.3%	18	-31.8%
Ecstasy (Methylenedioxyamphetamine )	0	0.0	0.0%	0	0.0	0.0%	0	0.0%
Crystal Meth (Methamphetamine)	0	0.0	0.0%	0	0.0	0.0%	0	0.0%
Heroin	0	0.0	0.0%	0	0.0	0.0%	0	0.0%
Cocaine	4	9.5	100.0%	6	13.9	83.3%	5	50.0%
Other Controlled Drugs and Substances	1	2.4	200.0%	3	7.0	100.0%	3	200.0%
<b>Total Drug Offences</b>	<b>27</b>	<b>63.8</b>	<b>103.7%</b>	<b>24</b>	<b>55.6</b>	<b>91.7%</b>	<b>26</b>	<b>-11.1%</b>

(1) Rate is calculated per 100,000 of population. As provided by the City of Ottawa's Planning and Growth Management Department, the population for 2014 and 2015 was 42,305 and 43,143 respectively.

(2) 5 Year Average and % Change are based on actual values

# 2014 - 2015 Crime Trends

## Ward 15 - Kitchissippi



### Calls For Service

Priority Level (3)	Response Type	2014		2015		Change % (2)
		Actual	Rate (1)	Actual	Rate (1)	
Priority 1	Mobile	203	479.8	165	382.4	-18.7%
	Alternate	0	0.0	0	0.0	0.0%
Priority 2	Mobile	1,015	2,399.2	1,173	2,718.9	15.6%
	Alternate	0	0.0	1	2.3	0.0%
Priority 3	Mobile	1,695	4,006.6	1,878	4,353.0	10.8%
	Alternate	0	0.0	1	2.3	0.0%
Priority 4	Mobile	5,552	13,123.7	5,074	11,760.9	-8.6%
	Alternate	647	1,529.4	880	2,039.7	36.0%
Priority 5	Mobile	57	134.7	88	204.0	54.4%
	Alternate	0	0.0	1	2.3	0.0%
Priority 6	Mobile	1,214	2,869.6	1,298	3,008.6	6.9%
	Alternate	1,942	4,590.5	1,435	3,326.1	-26.1%
Priority 7	Mobile	37	87.5	15	34.8	-59.5%
	Alternate	33	78.0	31	71.9	-6.1%
<b>All Priorities</b>	Total Mobile Response	9,773	23,101.3	9,691	22,462.5	-0.8%
	Total Alternative Response	2,622	6,197.8	2,349	5,444.7	-10.4%
	<b>Total Calls For Service</b>	<b>12,395</b>	<b>29,299.1</b>	<b>12,040</b>	<b>27,907.2</b>	<b>-2.9%</b>

(1) Rate is calculated per 100,000 of population. As provided by the City of Ottawa's Planning and Growth Management Department, the population for 2014 and 2015 was 42,305 and 43,143 respectively.

(2) % Change is based on actual values

(3) Call priority is determined based on the seriousness of the incident, ranging from imminent danger to life (P1) to property pickup (P7). The assignment of priority also considers the safety of police officers and the general public in traveling to the scene of the event.

# 2014 - 2015 Crime Trends

## Ward 15 - Kitchissippi

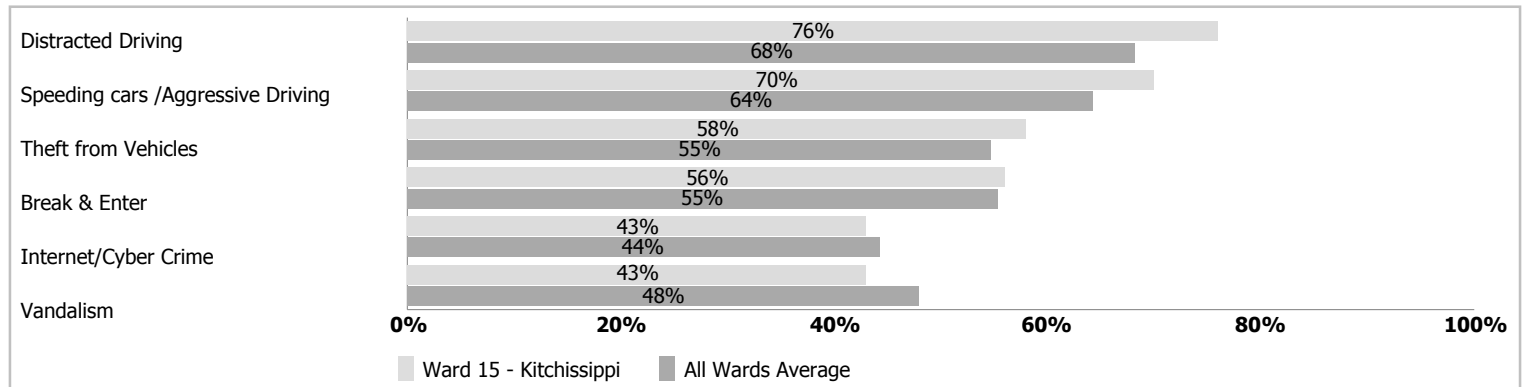


### Selected Public Survey Results (2015)

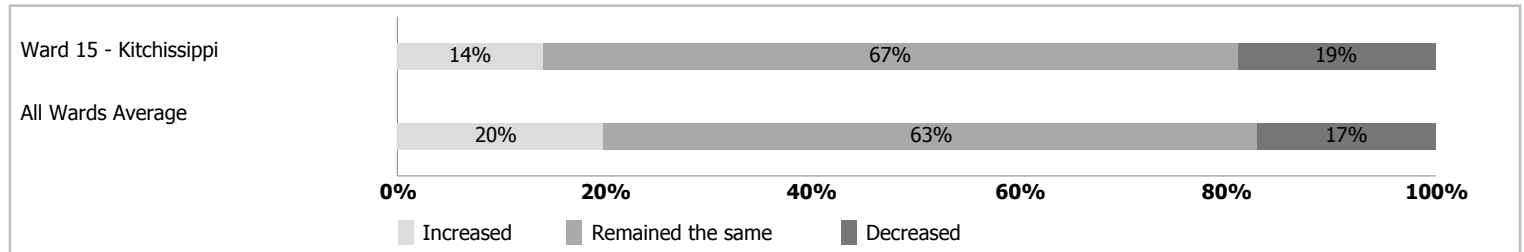
The Ottawa Police Service (OPS) and the Ottawa Police Services Board regularly seeks input on residents' perception of safety and security in their communities, concerns about crime, priorities for the police, and residents' satisfaction with police services. The information collected from the Public Survey assists the OPS to identify priorities, areas for improvement and helps the development of the Business Plan, published every three years.

For more information on the 2015 Public Survey, including citywide results, please refer to the OPS Highlights Report located on ottawapolice.ca. Please note, the following information represents the opinions and perceptions of respondents by ward and is not based on official crime figures or reports.

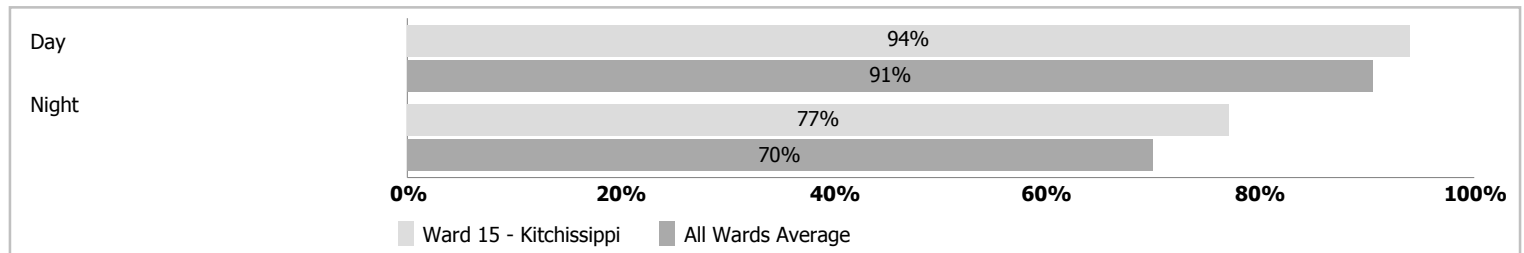
### Top Five Ward Concerns



### Level Of Crime



### Feeling Of Safety In The Neighbourhood



### Satisfaction With The Ottawa Police Services

