

2014 - 2015 Crime Trends

Ward 21 - Rideau-Goulbourn



This report examines all founded Criminal Code of Canada offences that were reported to the Ottawa Police over the last 5 years. Offences have been categorized according to the Uniform Crime Reporting (UCR) Survey version 2.2. Violent Crime, also referred to as Crimes Against The Person, involves the use or threat of force to harm another person. Non-Violent Crimes include Crimes Against Property and Other Criminal Code of Canada Offences

The crime statistics published in this report are accurate on the day that they were produced. Due to ongoing police investigations and internal data quality control efforts, this information is subject to change, including addition, deletion and reclassification of any and all data. Rates and percentages have been rounded.

Crime Rate (1)

2014	1,426.5		200.7		1,225.9	
2015	1,537.7	▲7.8%	229.6	▲14.4%	1,308.2	▲6.7%

Reported Crime (2)

2014	391		55		336	
2015	422	▲7.9%	63	▲14.5%	359	▲6.8%

Crime Severity Index (3)

2014	22.7		16.9		24.7	
2015	24.5	▲8.1%	14.6	▼13.7%	28.1	▲13.5%

Clearance Rate % (4)

2014	19.7%		50.9%		14.6%	
2015	22.3%	▲2.6%	63.5%	▲12.6%	15.0%	▲0.5%

Calls for Service

2014	7,749		88		576	
2015	7,208	▼7.0%	64	▼27.3%	589	▲2.3%

(1) Rate is calculated per 100,000 of population. As provided by the City of Ottawa's Planning and Growth Management Department, the population for 2014 and 2015 was 27,409 and 27,443 respectively.

(2) Reported Crime refers to the actual crime reported to the Ottawa Police Service within a calendar year. Unfounded incidents, those deemed through investigation not to have occurred, are excluded.

(3) The Crime Severity Index is a measure of police-reported crime that reflects the relative seriousness of individual offences and tracks changes in crime severity. Values are estimated and do not represent the official CSI as published by Statistics Canada.

(4) Clearance Rate (%) is expressed as a percent and is the sum of all Criminal Code of Canada Offences cleared by charge and cleared otherwise, divided by the total number of actual reported incidents.

2014 - 2015 Crime Trends

Ward 21 - Rideau-Goulbourn



Key Crime Trends

Offence	2014			2015			5-Year Average (2)	Change % (2)
	Actual	Rate (1)	Clearance %	Actual	Rate (1)	Clearance %		
Crimes Against The Person	55	200.7	50.9%	63	229.6	63.5%	51	14.5%
Crimes Against Property	313	1,142.0	11.8%	341	1,242.6	12.6%	373	8.9%
Other Criminal Code of Canada Offences	23	83.9	52.2%	18	65.6	61.1%	22	-21.7%
Total CCC offences excl Traffic	391	1,426.5	19.7%	422	1,537.7	22.3%	446	7.9%
Criminal Code Traffic Offences	28	102.2	92.9%	27	98.4	96.3%	36	-3.6%
Total CCC Offences incl Traffic	419	1,528.7	24.6%	449	1,636.1	26.7%	482	7.2%

Crimes Against The Person

Offence	2014			2015			5-Year Average (2)	Change % (2)
	Actual	Rate (1)	Clearance %	Actual	Rate (1)	Clearance %		
Homicide (Incidents)	0	0.0	0.0%	0	0.0	0.0%	0	0.0%
Attempted Murder	1	3.6	100.0%	0	0.0	0.0%	0	-100.0%
Robbery	2	7.3	50.0%	3	10.9	66.7%	2	50.0%
Assaults	23	83.9	60.9%	29	105.7	75.9%	27	26.1%
Sexual Violations	8	29.2	37.5%	9	32.8	66.7%	5	12.5%
Abduction	0	0.0	0.0%	0	0.0	0.0%	0	0.0%
Uttering Threats or Intimidation	3	10.9	33.3%	6	21.9	66.7%	5	100.0%
Other Offences	18	65.7	44.4%	16	58.3	31.3%	12	-11.1%
Total Crimes Against Person	55	200.7	50.9%	63	229.6	63.5%	51	14.5%

Crimes Against Property

Offence	2014			2015			5-Year Average (2)	Change % (2)
	Actual	Rate (1)	Clearance %	Actual	Rate (1)	Clearance %		
Arson	3	10.9	33.3%	3	10.9	0.0%	4	0.0%
Break and Enter	40	145.9	10.0%	73	266.0	23.3%	65	82.5%
Theft - Motor Vehicle	22	80.3	31.8%	23	83.8	13.0%	20	4.5%
Theft Over \$5000	10	36.5	10.0%	6	21.9	0.0%	6	-40.0%
Theft \$5000 and Under	110	401.3	12.7%	141	513.8	8.5%	155	28.2%
Possession of Stolen Goods	1	3.6	100.0%	0	0.0	0.0%	2	-100.0%
Fraud	38	138.6	7.9%	37	134.8	13.5%	35	-2.6%
Mischief	89	324.7	6.7%	58	211.3	10.3%	86	-34.8%
Total Crimes Against Property	313	1,142.0	11.8%	341	1,242.6	12.6%	373	8.9%

(1) Rate is calculated per 100,000 of population. As provided by the City of Ottawa's Planning and Growth Management Department, the population for 2014 and 2015 was 27,409 and 27,443 respectively.

(2) 5 Year Average and % Change are based on actual values

2014 - 2015 Crime Trends

Ward 21 - Rideau-Goulbourn



Other Criminal Code of Canada (CCC) Offences

Offence	2014			2015			5-Year Average (2)	Change % (2)
	Actual	Rate (1)	Clearance %	Actual	Rate (1)	Clearance %		
Offensive Weapons	3	10.9	100.0%	2	7.3	100.0%	3	-33.3%
Gaming and Betting	0	0.0	0.0%	0	0.0	0.0%	0	0.0%
Prostitution	0	0.0	0.0%	0	0.0	0.0%	0	0.0%
Other Criminal Code Offences	20	73.0	45.0%	16	58.3	56.3%	19	-20.0%
Total Other CCC Offences	23	83.9	52.2%	18	65.6	61.1%	22	-21.7%

Criminal Code Traffic Offences

Offence	2014			2015			5-Year Average (2)	Change % (2)
	Actual	Rate (1)	Clearance %	Actual	Rate (1)	Clearance %		
Dangerous Operation of Motor Vehicle	1	3.6	100.0%	2	7.3	50.0%	1	100.0%
Impaired Operation of Vehicle	21	76.6	95.2%	23	83.8	104.3%	20	9.5%
Failure to Stop or Remain	3	10.9	66.7%	1	3.6	100.0%	13	-66.7%
Driving Motor Vehicle While Prohibited	2	7.3	100.0%	0	0.0	0.0%	1	-100.0%
Other Criminal Code Traffic Offences	1	3.6	100.0%	1	3.6	0.0%	0	0.0%
Total Criminal Code Traffic Offences	28	102.2	92.9%	27	98.4	96.3%	36	-3.6%

Controlled Drug and Substances Act Offences

Offence	2014			2015			5-Year Average (2)	Change % (2)
	Actual	Rate (1)	Clearance %	Actual	Rate (1)	Clearance %		
Cannabis	11	40.1	81.8%	8	29.2	100.0%	20	-27.3%
Ecstasy (Methylenedioxyamphetamine)	1	3.6	100.0%	0	0.0	0.0%	0	-100.0%
Crystal Meth (Methamphetamine)	0	0.0	0.0%	0	0.0	0.0%	0	0.0%
Heroin	0	0.0	0.0%	0	0.0	0.0%	0	0.0%
Cocaine	0	0.0	0.0%	0	0.0	0.0%	0	0.0%
Other Controlled Drugs and Substances	0	0.0	0.0%	0	0.0	0.0%	0	0.0%
Total Drug Offences	12	43.8	83.3%	8	29.2	100.0%	21	-33.3%

(1) Rate is calculated per 100,000 of population. As provided by the City of Ottawa's Planning and Growth Management Department, the population for 2014 and 2015 was 27,409 and 27,443 respectively.

(2) 5 Year Average and % Change are based on actual values

2014 - 2015 Crime Trends

Ward 21 - Rideau-Goulbourn



Calls For Service

Priority Level (3)	Response Type	2014		2015		Change % (2)
		Actual	Rate (1)	Actual	Rate (1)	
Priority 1	Mobile	88	321.1	64	233.2	-27.3%
	Alternate	0	0.0	0	0.0	0.0%
Priority 2	Mobile	575	2,097.9	589	2,146.3	2.4%
	Alternate	1	3.6	0	0.0	-100.0%
Priority 3	Mobile	562	2,050.4	599	2,182.7	6.6%
	Alternate	0	0.0	1	3.6	0.0%
Priority 4	Mobile	4,780	17,439.5	4,279	15,592.3	-10.5%
	Alternate	161	587.4	308	1,122.3	91.3%
Priority 5	Mobile	73	266.3	79	287.9	8.2%
	Alternate	0	0.0	0	0.0	0.0%
Priority 6	Mobile	669	2,440.8	638	2,324.8	-4.6%
	Alternate	825	3,010.0	632	2,303.0	-23.4%
Priority 7	Mobile	7	25.5	3	10.9	-57.1%
	Alternate	8	29.2	16	58.3	100.0%
All Priorities	Total Mobile Response	6,754	24,641.5	6,251	22,778.1	-7.4%
	Total Alternative Response	995	3,630.2	957	3,487.2	-3.8%
	Total Calls For Service	7,749	28,271.7	7,208	26,265.3	-7.0%

(1) Rate is calculated per 100,000 of population. As provided by the City of Ottawa's Planning and Growth Management Department, the population for 2014 and 2015 was 27,409 and 27,443 respectively.

(2) % Change is based on actual values

(3) Call priority is determined based on the seriousness of the incident, ranging from imminent danger to life (P1) to property pickup (P7). The assignment of priority also considers the safety of police officers and the general public in traveling to the scene of the event.

2014 - 2015 Crime Trends

Ward 21 - Rideau-Goulbourn

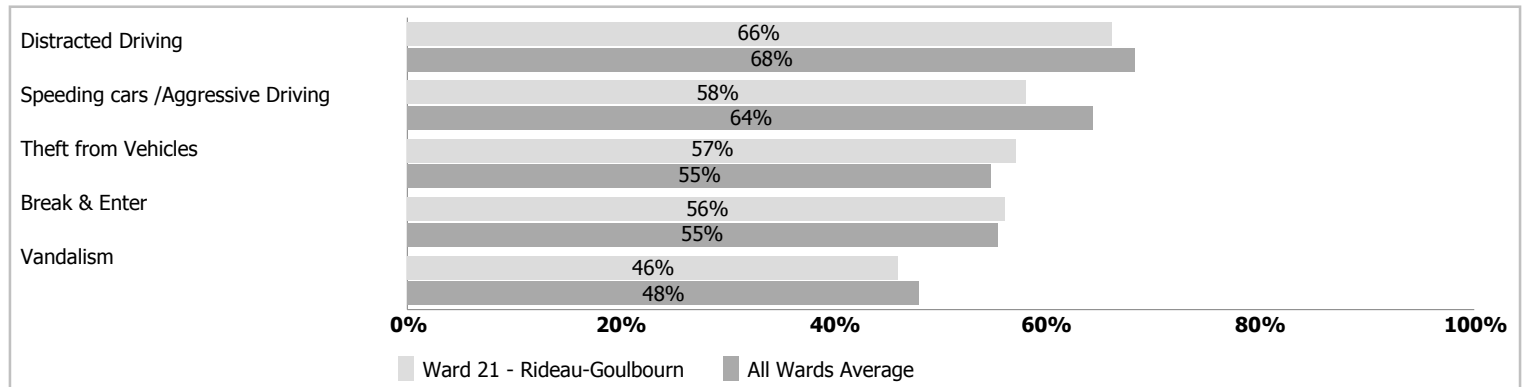


Selected Public Survey Results (2015)

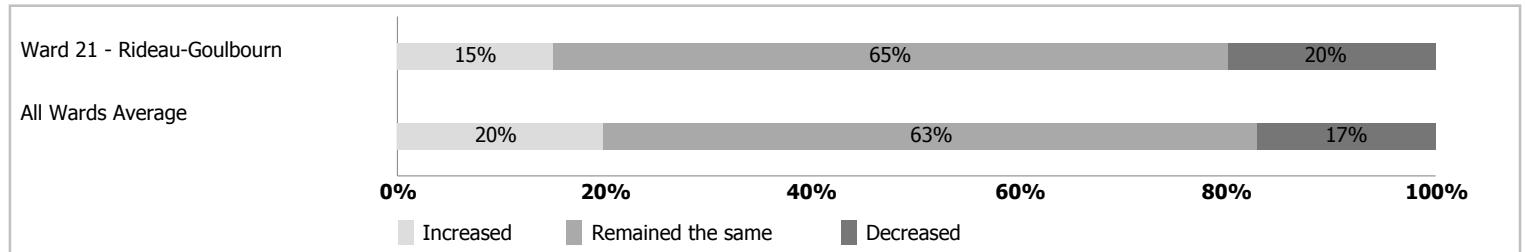
The Ottawa Police Service (OPS) and the Ottawa Police Services Board regularly seeks input on residents' perception of safety and security in their communities, concerns about crime, priorities for the police, and residents' satisfaction with police services. The information collected from the Public Survey assists the OPS to identify priorities, areas for improvement and helps the development of the Business Plan, published every three years.

For more information on the 2015 Public Survey, including citywide results, please refer to the OPS Highlights Report located on ottawapolice.ca. Please note, the following information represents the opinions and perceptions of respondents by ward and is not based on official crime figures or reports.

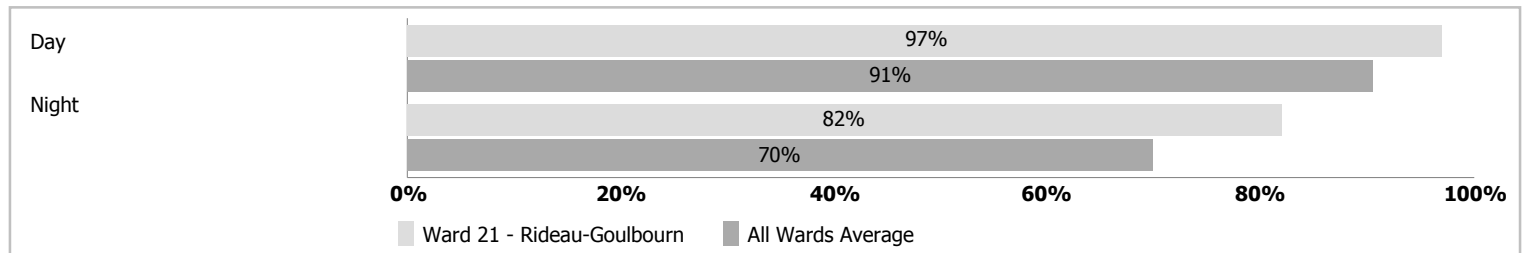
Top Five Ward Concerns



Level Of Crime



Feeling Of Safety In The Neighbourhood



Satisfaction With The Ottawa Police Services

