

2014 - 2015 Crime Trends

Ward 3 - Barrhaven



This report examines all founded Criminal Code of Canada offences that were reported to the Ottawa Police over the last 5 years. Offences have been categorized according to the Uniform Crime Reporting (UCR) Survey version 2.2. Violent Crime, also referred to as Crimes Against The Person, involves the use or threat of force to harm another person. Non-Violent Crimes include Crimes Against Property and Other Criminal Code of Canada Offences

The crime statistics published in this report are accurate on the day that they were produced. Due to ongoing police investigations and internal data quality control efforts, this information is subject to change, including addition, deletion and reclassification of any and all data. Rates and percentages have been rounded.

Crime Rate (1)

	2014	2015	Change	2014	2015	Change	2014	2015	Change
Crime Rate	1,425.0	1,365.7	▼4.2%	244.0	242.6	▼0.6%	1,181.0	1,123.1	▼4.9%

Reported Crime (2)

	2014	2015	Change	2014	2015	Change	2014	2015	Change
Reported Crime	800	788	▼1.5%	137	140	▲2.2%	663	648	▼2.3%

Crime Severity Index (3)

	2014	2015	Change	2014	2015	Change	2014	2015	Change
Crime Severity Index	21.7	19.3	▼11.3%	27.0	17.5	▼35.1%	19.8	19.9	▲0.6%

Clearance Rate % (4)

	2014	2015	Change	2014	2015	Change	2014	2015	Change
Clearance Rate %	19.8%	22.2%	▲2.5%	50.4%	62.1%	▲11.8%	13.4%	13.6%	▲0.2%

Calls for Service

	2014	2015	Change	2014	2015	Change	2014	2015	Change
Calls for Service	8,439	8,411	▼0.3%	83	92	▲10.8%	760	690	▼9.2%

Priority 1

	2014	2015	Change	2014	2015	Change	2014	2015	Change
Priority 1	83	92	▲10.8%	760	690	▼9.2%			

Priority 2

	2014	2015	Change	2014	2015	Change	2014	2015	Change
Priority 2	760	690	▼9.2%						

- (1) Rate is calculated per 100,000 of population. As provided by the City of Ottawa's Planning and Growth Management Department, the population for 2014 and 2015 was 56,139 and 57,698 respectively.
- (2) Reported Crime refers to the actual crime reported to the Ottawa Police Service within a calendar year. Unfounded incidents, those deemed through investigation not to have occurred, are excluded.
- (3) The Crime Severity Index is a measure of police-reported crime that reflects the relative seriousness of individual offences and tracks changes in crime severity. Values are estimated and do not represent the official CSI as published by Statistics Canada.
- (4) Clearance Rate (%) is expressed as a percent and is the sum of all Criminal Code of Canada Offences cleared by charge and cleared otherwise, divided by the total number of actual reported incidents.

2014 - 2015 Crime Trends

Ward 3 - Barrhaven



Key Crime Trends

Offence	2014			2015			5-Year Average (2)	Change % (2)
	Actual	Rate (1)	Clearance %	Actual	Rate (1)	Clearance %		
Crimes Against The Person	137	244.0	50.4%	140	242.6	62.1%	128	2.2%
Crimes Against Property	600	1,068.8	9.0%	593	1,027.8	9.1%	655	-1.2%
Other Criminal Code of Canada Offences	63	112.2	55.6%	55	95.3	61.8%	47	-12.7%
Total CCC offences excl Traffic	800	1,425.0	19.8%	788	1,365.7	22.2%	830	-1.5%
Criminal Code Traffic Offences	30	53.4	96.7%	27	46.8	96.3%	47	-10.0%
Total CCC Offences incl Traffic	830	1,478.5	22.5%	815	1,412.5	24.7%	878	-1.8%

Crimes Against The Person

Offence	2014			2015			5-Year Average (2)	Change % (2)
	Actual	Rate (1)	Clearance %	Actual	Rate (1)	Clearance %		
Homicide (Incidents)	1	1.8	100.0%	0	0.0	0.0%	1	-100.0%
Attempted Murder	0	0.0	0.0%	0	0.0	0.0%	0	0.0%
Robbery	13	23.2	38.5%	10	17.3	10.0%	16	-23.1%
Assaults	54	96.2	64.8%	89	154.3	65.2%	63	64.8%
Sexual Violations	17	30.3	35.3%	16	27.7	87.5%	12	-5.9%
Abduction	3	5.3	33.3%	1	1.7	0.0%	2	-66.7%
Uttering Threats or Intimidation	11	19.6	54.5%	9	15.6	88.9%	11	-18.2%
Other Offences	38	67.7	39.5%	15	26.0	40.0%	24	-60.5%
Total Crimes Against Person	137	244.0	50.4%	140	242.6	62.1%	128	2.2%

Crimes Against Property

Offence	2014			2015			5-Year Average (2)	Change % (2)
	Actual	Rate (1)	Clearance %	Actual	Rate (1)	Clearance %		
Arson	5	8.9	20.0%	4	6.9	25.0%	4	-20.0%
Break and Enter	69	122.9	15.9%	96	166.4	8.3%	75	39.1%
Theft - Motor Vehicle	20	35.6	35.0%	17	29.5	17.6%	19	-15.0%
Theft Over \$5000	6	10.7	0.0%	7	12.1	0.0%	6	16.7%
Theft \$5000 and Under	237	422.2	5.5%	243	421.2	6.2%	290	2.5%
Possession of Stolen Goods	4	7.1	75.0%	3	5.2	100.0%	3	-25.0%
Fraud	90	160.3	10.0%	83	143.9	15.7%	82	-7.8%
Mischief	169	301.0	5.9%	140	242.6	7.9%	176	-17.2%
Total Crimes Against Property	600	1,068.8	9.0%	593	1,027.8	9.1%	655	-1.2%

(1) Rate is calculated per 100,000 of population. As provided by the City of Ottawa's Planning and Growth Management Department, the population for 2014 and 2015 was 56,139 and 57,698 respectively.

(2) 5 Year Average and % Change are based on actual values

2014 - 2015 Crime Trends

Ward 3 - Barrhaven



Other Criminal Code of Canada (CCC) Offences

Offence	2014			2015			5-Year Average (2)	Change % (2)
	Actual	Rate (1)	Clearance %	Actual	Rate (1)	Clearance %		
Offensive Weapons	4	7.1	100.0%	3	5.2	100.0%	4	-25.0%
Gaming and Betting	0	0.0	0.0%	0	0.0	0.0%	0	0.0%
Prostitution	0	0.0	0.0%	0	0.0	0.0%	0	0.0%
Other Criminal Code Offences	59	105.1	52.5%	52	90.1	59.6%	44	-11.9%
Total Other CCC Offences	63	112.2	55.6%	55	95.3	61.8%	47	-12.7%

Criminal Code Traffic Offences

Offence	2014			2015			5-Year Average (2)	Change % (2)
	Actual	Rate (1)	Clearance %	Actual	Rate (1)	Clearance %		
Dangerous Operation of Motor Vehicle	1	1.8	100.0%	1	1.7	100.0%	1	0.0%
Impaired Operation of Vehicle	25	44.5	100.0%	23	39.9	100.0%	20	-8.0%
Failure to Stop or Remain	4	7.1	75.0%	3	5.2	66.7%	26	-25.0%
Driving Motor Vehicle While Prohibited	0	0.0	0.0%	0	0.0	0.0%	0	0.0%
Other Criminal Code Traffic Offences	0	0.0	0.0%	0	0.0	0.0%	0	0.0%
Total Criminal Code Traffic Offences	30	53.4	96.7%	27	46.8	96.3%	47	-10.0%

Controlled Drug and Substances Act Offences

Offence	2014			2015			5-Year Average (2)	Change % (2)
	Actual	Rate (1)	Clearance %	Actual	Rate (1)	Clearance %		
Cannabis	24	42.8	95.8%	14	24.3	85.7%	26	-41.7%
Ecstasy (Methylenedioxyamphetamine)	1	1.8	100.0%	0	0.0	0.0%	0	-100.0%
Crystal Meth (Methamphetamine)	0	0.0	0.0%	0	0.0	0.0%	0	0.0%
Heroin	0	0.0	0.0%	0	0.0	0.0%	0	0.0%
Cocaine	1	1.8	0.0%	1	1.7	100.0%	1	0.0%
Other Controlled Drugs and Substances	0	0.0	0.0%	1	1.7	100.0%	1	0.0%
Total Drug Offences	26	46.3	92.3%	16	27.7	87.5%	29	-38.5%

(1) Rate is calculated per 100,000 of population. As provided by the City of Ottawa's Planning and Growth Management Department, the population for 2014 and 2015 was 56,139 and 57,698 respectively.

(2) 5 Year Average and % Change are based on actual values

2014 - 2015 Crime Trends

Ward 3 - Barrhaven



Calls For Service

Priority Level (3)	Response Type	2014		2015		Change % (2)
		Actual	Rate (1)	Actual	Rate (1)	
Priority 1	Mobile	83	147.8	92	159.5	10.8%
	Alternate	0	0.0	0	0.0	0.0%
Priority 2	Mobile	759	1,352.0	690	1,195.9	-9.1%
	Alternate	1	1.8	0	0.0	-100.0%
Priority 3	Mobile	956	1,702.9	956	1,656.9	0.0%
	Alternate	0	0.0	0	0.0	0.0%
Priority 4	Mobile	3,858	6,872.2	3,578	6,201.3	-7.3%
	Alternate	289	514.8	534	925.5	84.8%
Priority 5	Mobile	45	80.2	50	86.7	11.1%
	Alternate	0	0.0	0	0.0	0.0%
Priority 6	Mobile	1,076	1,916.7	1,405	2,435.1	30.6%
	Alternate	1,330	2,369.1	1,072	1,858.0	-19.4%
Priority 7	Mobile	23	41.0	12	20.8	-47.8%
	Alternate	19	33.8	22	38.1	15.8%
All Priorities	Total Mobile Response	6,800	12,112.8	6,783	11,756.0	-0.3%
	Total Alternative Response	1,639	2,919.5	1,628	2,821.6	-0.7%
	Total Calls For Service	8,439	15,032.3	8,411	14,577.6	-0.3%

(1) Rate is calculated per 100,000 of population. As provided by the City of Ottawa's Planning and Growth Management Department, the population for 2014 and 2015 was 56,139 and 57,698 respectively.

(2) % Change is based on actual values

(3) Call priority is determined based on the seriousness of the incident, ranging from imminent danger to life (P1) to property pickup (P7). The assignment of priority also considers the safety of police officers and the general public in traveling to the scene of the event.

2014 - 2015 Crime Trends

Ward 3 - Barrhaven

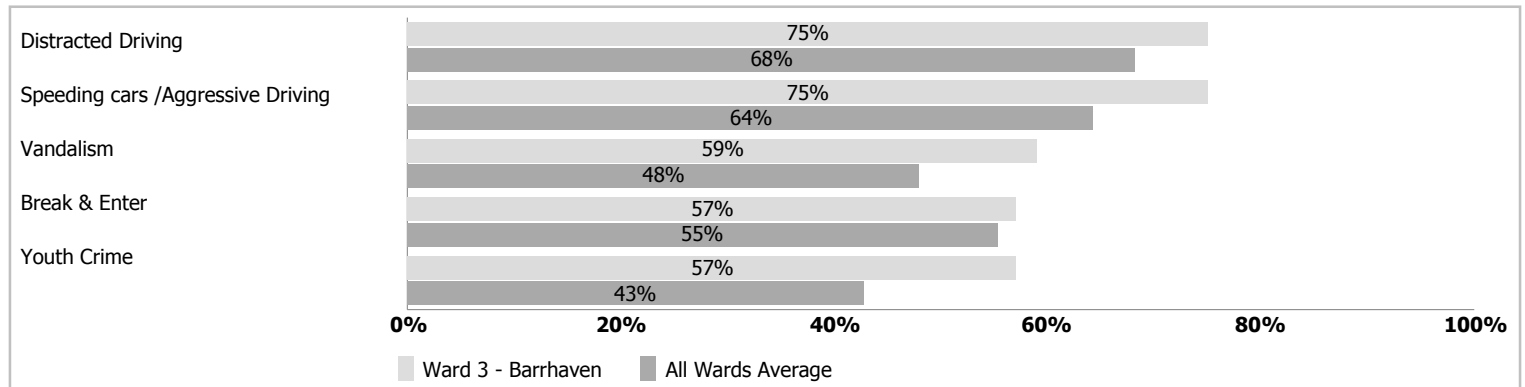


Selected Public Survey Results (2015)

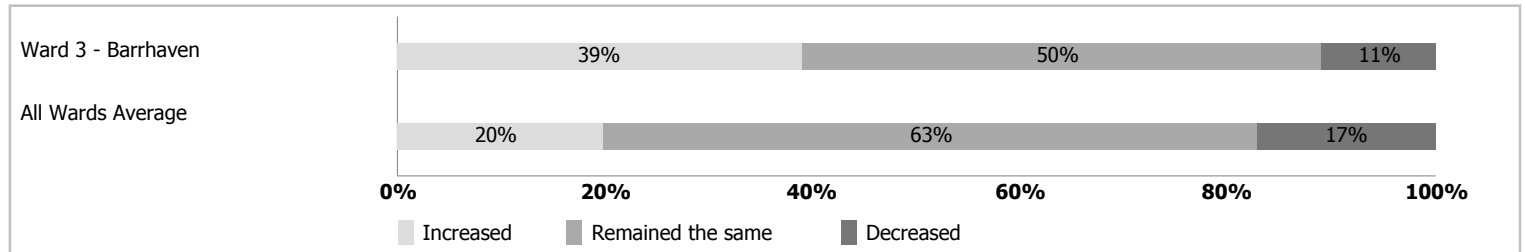
The Ottawa Police Service (OPS) and the Ottawa Police Services Board regularly seeks input on residents' perception of safety and security in their communities, concerns about crime, priorities for the police, and residents' satisfaction with police services. The information collected from the Public Survey assists the OPS to identify priorities, areas for improvement and helps the development of the Business Plan, published every three years.

For more information on the 2015 Public Survey, including citywide results, please refer to the OPS Highlights Report located on ottawapolice.ca. Please note, the following information represents the opinions and perceptions of respondents by ward and is not based on official crime figures or reports.

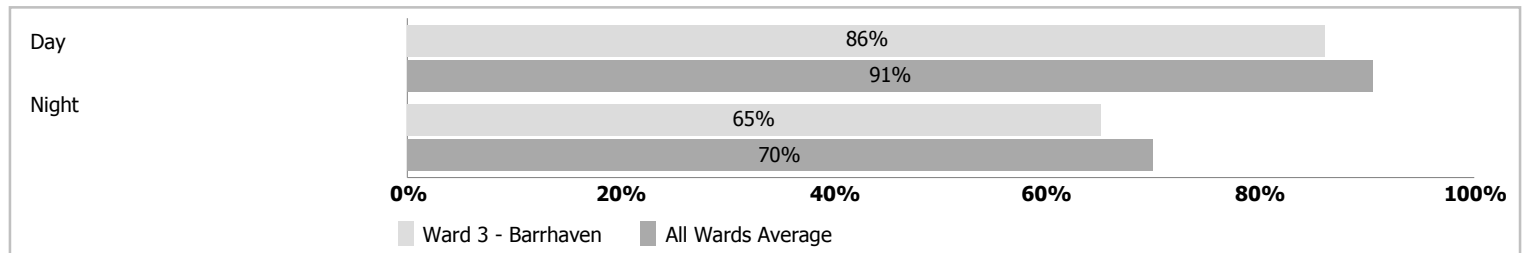
Top Five Ward Concerns



Level Of Crime



Feeling Of Safety In The Neighbourhood



Satisfaction With The Ottawa Police Services

