

2014 - 2015 Crime Trends

Ward 7 - Bay



This report examines all founded Criminal Code of Canada offences that were reported to the Ottawa Police over the last 5 years. Offences have been categorized according to the Uniform Crime Reporting (UCR) Survey version 2.2. Violent Crime, also referred to as Crimes Against The Person, involves the use or threat of force to harm another person. Non-Violent Crimes include Crimes Against Property and Other Criminal Code of Canada Offences

The crime statistics published in this report are accurate on the day that they were produced. Due to ongoing police investigations and internal data quality control efforts, this information is subject to change, including addition, deletion and reclassification of any and all data. Rates and percentages have been rounded.

Crime Rate (1)

	2014	2015	Change	2014	2015	Change	2014	2015	Change
Crime Rate	3,623.7	3,157.4	▼12.9%	613.8	481.2	▼21.6%	3,009.8	2,676.2	▼11.1%

Reported Crime (2)

Reported Crime	1,647	1,437	▼12.8%	279	219	▼21.5%	1,368	1,218	▼11.0%
-----------------------	-------	-------	--------	-----	-----	--------	-------	-------	--------

Crime Severity Index (3)

Crime Severity Index	46.3	40.6	▼12.2%	54.9	37.6	▼31.5%	43.0	41.7	▼3.2%
-----------------------------	------	------	--------	------	------	--------	------	------	-------

Clearance Rate % (4)

Clearance Rate %	41.8%	39.1%	▼2.7%	59.9%	55.3%	▼4.6%	38.1%	36.2%	▼1.9%
-------------------------	-------	-------	-------	-------	-------	-------	-------	-------	-------

Calls for Service

	2014	2015	Change	2014	2015	Change	2014	2015	Change
Calls for Service	13,351	13,701	▲2.6%	214	214	▲0.0%	1,300	1,454	▲11.8%

(1) Rate is calculated per 100,000 of population. As provided by the City of Ottawa's Planning and Growth Management Department, the population for 2014 and 2015 was 45,451 and 45,512 respectively.

(2) Reported Crime refers to the actual crime reported to the Ottawa Police Service within a calendar year. Unfounded incidents, those deemed through investigation not to have occurred, are excluded.

(3) The Crime Severity Index is a measure of police-reported crime that reflects the relative seriousness of individual offences and tracks changes in crime severity. Values are estimated and do not represent the official CSI as published by Statistics Canada.

(4) Clearance Rate (%) is expressed as a percent and is the sum of all Criminal Code of Canada Offences cleared by charge and cleared otherwise, divided by the total number of actual reported incidents.

2014 - 2015 Crime Trends

Ward 7 - Bay



Key Crime Trends

Offence	2014			2015			5-Year Average (2)	Change % (2)
	Actual	Rate (1)	Clearance %	Actual	Rate (1)	Clearance %		
Crimes Against The Person	279	613.8	59.9%	219	481.2	55.3%	256	-21.5%
Crimes Against Property	1,261	2,774.4	36.3%	1,100	2,416.9	32.1%	1,330	-12.8%
Other Criminal Code of Canada Offences	107	235.4	58.9%	118	259.3	74.6%	113	10.3%
Total CCC offences excl Traffic	1,647	3,623.7	41.8%	1,437	3,157.4	39.1%	1,699	-12.8%
Criminal Code Traffic Offences	40	88.0	92.5%	31	68.1	103.2%	105	-22.5%
Total CCC Offences incl Traffic	1,687	3,711.7	43.0%	1,468	3,225.5	40.5%	1,804	-13.0%

Crimes Against The Person

Offence	2014			2015			5-Year Average (2)	Change % (2)
	Actual	Rate (1)	Clearance %	Actual	Rate (1)	Clearance %		
Homicide (Incidents)	0	0.0	0.0%	0	0.0	0.0%	1	0.0%
Attempted Murder	0	0.0	0.0%	2	4.4	50.0%	1	0.0%
Robbery	29	63.8	51.7%	11	24.2	27.3%	33	-62.1%
Assaults	156	343.2	62.8%	117	257.1	64.1%	138	-25.0%
Sexual Violations	28	61.6	53.6%	33	72.5	36.4%	23	17.9%
Abduction	8	17.6	62.5%	4	8.8	75.0%	5	-50.0%
Uttering Threats or Intimidation	19	41.8	84.2%	20	43.9	50.0%	20	5.3%
Other Offences	39	85.8	46.2%	32	70.3	53.1%	37	-17.9%
Total Crimes Against Person	279	613.8	59.9%	219	481.2	55.3%	256	-21.5%

Crimes Against Property

Offence	2014			2015			5-Year Average (2)	Change % (2)
	Actual	Rate (1)	Clearance %	Actual	Rate (1)	Clearance %		
Arson	5	11.0	20.0%	8	17.6	37.5%	7	60.0%
Break and Enter	96	211.2	25.0%	93	204.3	12.9%	110	-3.1%
Theft - Motor Vehicle	36	79.2	19.4%	48	105.5	16.7%	46	33.3%
Theft Over \$5000	7	15.4	42.9%	9	19.8	44.4%	12	28.6%
Theft \$5000 and Under	749	1,647.9	48.3%	611	1,342.5	42.4%	791	-18.4%
Possession of Stolen Goods	6	13.2	83.3%	4	8.8	100.0%	9	-33.3%
Fraud	137	301.4	24.8%	145	318.6	27.6%	151	5.8%
Mischief	225	495.0	9.8%	182	399.9	12.6%	202	-19.1%
Total Crimes Against Property	1,261	2,774.4	36.3%	1,100	2,416.9	32.1%	1,330	-12.8%

(1) Rate is calculated per 100,000 of population. As provided by the City of Ottawa's Planning and Growth Management Department, the population for 2014 and 2015 was 45,451 and 45,512 respectively.

(2) 5 Year Average and % Change are based on actual values

2014 - 2015 Crime Trends

Ward 7 - Bay



Other Criminal Code of Canada (CCC) Offences

Offence	2014			2015			5-Year Average (2)	Change % (2)
	Actual	Rate (1)	Clearance %	Actual	Rate (1)	Clearance %		
Offensive Weapons	8	17.6	87.5%	7	15.4	71.4%	9	-12.5%
Gaming and Betting	0	0.0	0.0%	0	0.0	0.0%	0	0.0%
Prostitution	0	0.0	0.0%	0	0.0	0.0%	0	0.0%
Other Criminal Code Offences	99	217.8	56.6%	111	243.9	74.8%	104	12.1%
Total Other CCC Offences	107	235.4	58.9%	118	259.3	74.6%	113	10.3%

Criminal Code Traffic Offences

Offence	2014			2015			5-Year Average (2)	Change % (2)
	Actual	Rate (1)	Clearance %	Actual	Rate (1)	Clearance %		
Dangerous Operation of Motor Vehicle	5	11.0	40.0%	3	6.6	133.3%	4	-40.0%
Impaired Operation of Vehicle	29	63.8	96.6%	21	46.1	104.8%	25	-27.6%
Failure to Stop or Remain	3	6.6	133.3%	3	6.6	66.7%	72	0.0%
Driving Motor Vehicle While Prohibited	3	6.6	100.0%	3	6.6	100.0%	3	0.0%
Other Criminal Code Traffic Offences	0	0.0	0.0%	1	2.2	100.0%	1	0.0%
Total Criminal Code Traffic Offences	40	88.0	92.5%	31	68.1	103.2%	105	-22.5%

Controlled Drug and Substances Act Offences

Offence	2014			2015			5-Year Average (2)	Change % (2)
	Actual	Rate (1)	Clearance %	Actual	Rate (1)	Clearance %		
Cannabis	36	79.2	94.4%	25	54.9	108.0%	43	-30.6%
Ecstasy (Methylenedioxyamphetamine)	0	0.0	0.0%	0	0.0	0.0%	0	0.0%
Crystal Meth (Methamphetamine)	0	0.0	0.0%	0	0.0	0.0%	0	0.0%
Heroin	0	0.0	0.0%	0	0.0	0.0%	0	0.0%
Cocaine	3	6.6	100.0%	8	17.6	100.0%	8	166.7%
Other Controlled Drugs and Substances	2	4.4	100.0%	3	6.6	100.0%	2	50.0%
Total Drug Offences	41	90.2	95.1%	36	79.1	105.6%	53	-12.2%

(1) Rate is calculated per 100,000 of population. As provided by the City of Ottawa's Planning and Growth Management Department, the population for 2014 and 2015 was 45,451 and 45,512 respectively.

(2) 5 Year Average and % Change are based on actual values

2014 - 2015 Crime Trends

Ward 7 - Bay



Calls For Service

Priority Level (3)	Response Type	2014		2015		Change % (2)
		Actual	Rate (1)	Actual	Rate (1)	
Priority 1	Mobile	214	470.8	214	470.2	0.0%
	Alternate	0	0.0	0	0.0	0.0%
Priority 2	Mobile	1,299	2,858.0	1,448	3,181.6	11.5%
	Alternate	1	2.2	6	13.2	500.0%
Priority 3	Mobile	1,888	4,153.9	1,734	3,810.0	-8.2%
	Alternate	1	2.2	0	0.0	-100.0%
Priority 4	Mobile	5,890	12,959.0	6,357	13,967.7	7.9%
	Alternate	581	1,278.3	766	1,683.1	31.8%
Priority 5	Mobile	102	224.4	178	391.1	74.5%
	Alternate	1	2.2	0	0.0	-100.0%
Priority 6	Mobile	1,385	3,047.2	1,394	3,062.9	0.6%
	Alternate	1,930	4,246.3	1,539	3,381.5	-20.3%
Priority 7	Mobile	30	66.0	18	39.6	-40.0%
	Alternate	29	63.8	47	103.3	62.1%
All Priorities	Total Mobile Response	10,808	23,779.5	11,343	24,923.1	5.0%
	Total Alternative Response	2,543	5,595.0	2,358	5,181.1	-7.3%
	Total Calls For Service	13,351	29,374.5	13,701	30,104.1	2.6%

(1) Rate is calculated per 100,000 of population. As provided by the City of Ottawa's Planning and Growth Management Department, the population for 2014 and 2015 was 45,451 and 45,512 respectively.

(2) % Change is based on actual values

(3) Call priority is determined based on the seriousness of the incident, ranging from imminent danger to life (P1) to property pickup (P7). The assignment of priority also considers the safety of police officers and the general public in traveling to the scene of the event.

2014 - 2015 Crime Trends

Ward 7 - Bay

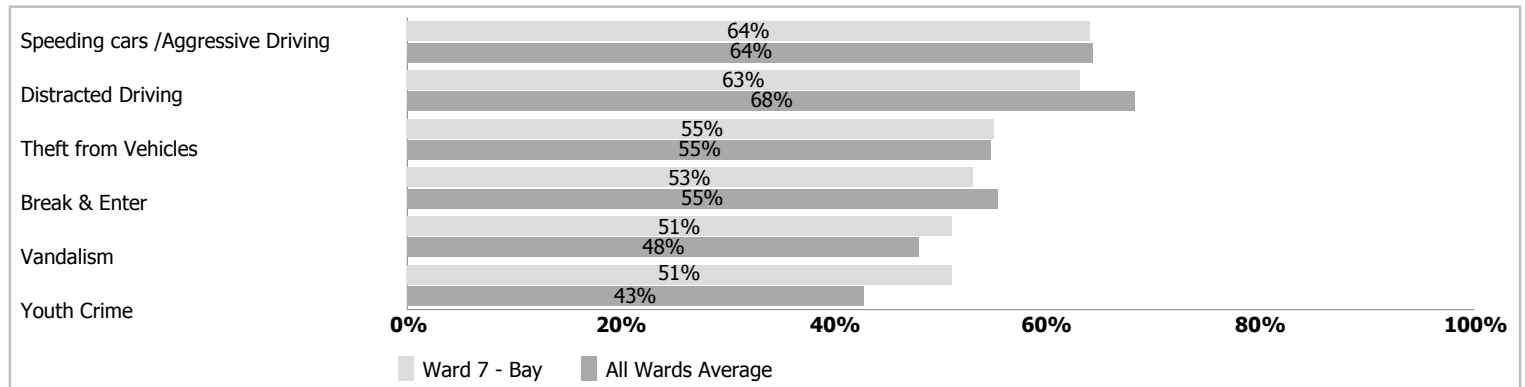


Selected Public Survey Results (2015)

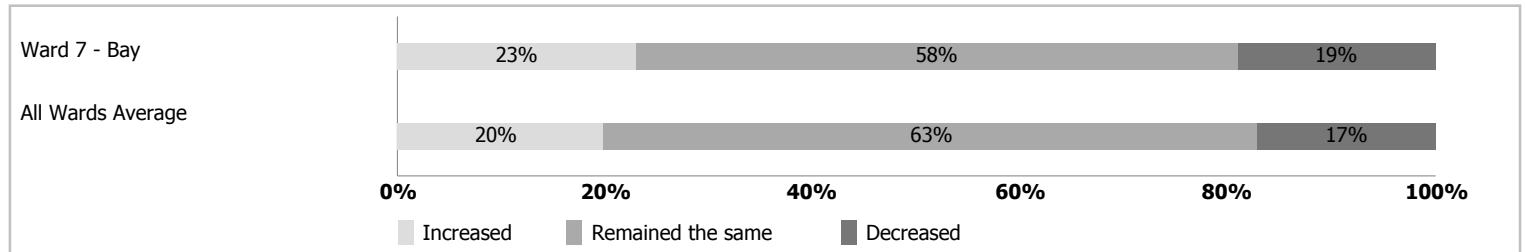
The Ottawa Police Service (OPS) and the Ottawa Police Services Board regularly seeks input on residents' perception of safety and security in their communities, concerns about crime, priorities for the police, and residents' satisfaction with police services. The information collected from the Public Survey assists the OPS to identify priorities, areas for improvement and helps the development of the Business Plan, published every three years.

For more information on the 2015 Public Survey, including citywide results, please refer to the OPS Highlights Report located on ottawapolice.ca. Please note, the following information represents the opinions and perceptions of respondents by ward and is not based on official crime figures or reports.

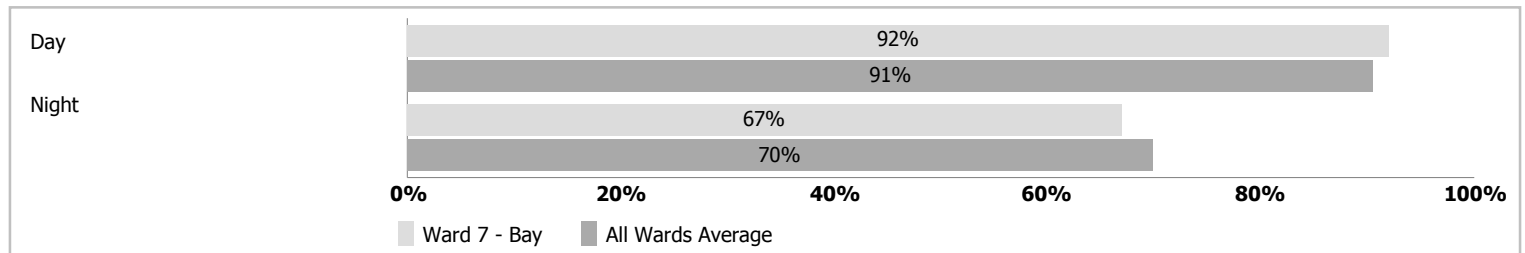
Top Five Ward Concerns



Level Of Crime



Feeling Of Safety In The Neighbourhood



Satisfaction With The Ottawa Police Services

